

# Silencers

**FESTO**

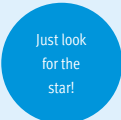


Festo Core Range  
Solves the majority of your automation tasks


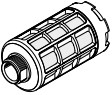

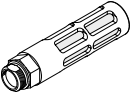
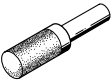

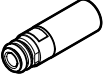
With the Festo Core Range, we have selected the most important products and functions from our broad product catalogue, and added the quickest delivery.


Worldwide: Quickest delivery – wherever, whenever  
Simply good: Expected high Festo quality  
Fast: Easy and fast to select

The Core Range offers you the best value for your automation tasks.




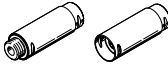
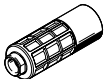
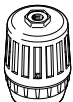


Product range overview

| Version  | Type    | Connection D1 |          |            | Push-in connector  | For tubing I.D. | Push-in sleeve<br>∅ | Noise level<br>[dB (A)] | → Page/<br>Internet |      |
|--|---------|---------------|----------|------------|--------------------|-----------------|---------------------|-------------------------|---------------------|------|
|  |         | M thread      | G thread | NPT thread |                    |                 |                     |                         |                     |      |
| <b>Sintered metal</b>  |         |               |          |            |                    |                 |                     |                         |                     |      |
|        | U       | -             | -        | -          | -                  | 3               | -                   | < 70                    | 4                   |      |
|  |         |               |          |            |                    | 4               |                     | < 77                    |                     |      |
| <b>Polymer, male thread</b>  |         |               |          |            |                    |                 |                     |                         |                     |      |
|        | U       | -             | G1/8     | -          | -                  | -               | -                   | < 74                    | 5                   |      |
|  |         |               | G1/4     |            |                    |                 |                     | < 76                    |                     |      |
|  |         |               | G3/8     |            |                    |                 |                     | < 82                    |                     |      |
|  |         |               | G1/2     |            |                    |                 |                     | < 82                    |                     |      |
|  |         |               | G3/4     |            |                    |                 |                     | < 85                    |                     |      |
|  |         |               | G1       |            |                    |                 |                     | < 90                    |                     |      |
| <b>Polymer, female thread</b>  |         |               |          |            |                    |                 |                     |                         |                     |      |
|        | U-...-I | -             | G1/8     | -          | -                  | -               | -                   | < 76.5                  | 6                   |      |
| <b>Die-cast metal</b>  |         |               |          |            |                    |                 |                     |                         |                     |      |
|        | U-...-B | -             | G1/8     | -          | -                  | -               | -                   | < 74                    | 7                   |      |
|  |         |               | G1/4     |            |                    |                 |                     | < 80                    |                     |      |
|  |         |               | G3/8     |            |                    |                 |                     | < 80                    |                     |      |
|  |         |               | G1/2     |            |                    |                 |                     | < 81                    |                     |      |
|  |         |               | G3/4     |            |                    |                 |                     | < 83                    |                     |      |
|  |         |               | G1       |            |                    |                 |                     | < 85                    |                     |      |
|  |         | -             |          | 3/4 NPT    | -                  | -               | -                   | < 81                    | 8                   |      |
| <b>With push-in sleeve for push-in fitting QS, Quick Star</b>                          |         |               |          |            |                    |                 |                     |                         |                     |      |
|      | UC-QS   | -             | -        | -          | -                  | -               | 3                   | < 60                    | 9                   |      |
|  |         |               |          |            |                    |                 | 4                   | < 60                    |                     |      |
|  |         |               |          |            |                    |                 | 6                   | < 60                    |                     |      |
|  |         |               |          |            |                    |                 | 8                   | < 60                    |                     |      |
|  |         |               |          |            |                    |                 | 10                  | < 68                    |                     |      |
| <b>Threaded connection, for solenoid valves CPE, Compact Performance</b>               |         |               |          |            |                    |                 |                     |                         |                     |      |
|      | UC      | M5            | -        | -          | -                  | -               | -                   | < 60                    | 10                  |      |
|  |         | M7            |          |            |                    |                 |                     | < 58                    |                     |      |
|  |         | -             |          |            |                    |                 |                     | G1/8                    |                     | < 59 |
|  |         |               |          |            |                    |                 |                     | G1/4                    |                     | < 60 |
|  |         |               |          |            |                    |                 |                     | G3/8                    |                     | < 60 |
| <b>Push-in connector, for solenoid valves VUVB-ST12/valve terminal type 23 VTUB-12</b> |         |               |          |            |                    |                 |                     |                         |                     |      |
|      | AMTC    | -             | -        | -          | Cartridge<br>10 mm | -               | -                   | < 58                    | 11                  |      |

 **Note**  
Clean silencers with kerosene (not with petrol or trichloroethylene).

Product range overview

| Version   | Type      | Connection D1 |          |              | Push-in connector | For tubing I.D. | Push-in sleeve<br>∅ | Noise level<br>[dB (A)] | → Page/<br>Internet |      |    |
|---|-----------|---------------|----------|--------------|-------------------|-----------------|---------------------|-------------------------|---------------------|------|----|
|   |           | M thread      | G thread | NPT thread   |                   |                 |                     |                         |                     |      |    |
| <b>Metal</b>  |           |               |          |              |                   |                 |                     |                         |                     |      |    |
|    | AMTE-M-H  | M5            | -        | -            | -                 | -               | -                   | < 71                    | 12                  |      |    |
|   |           | -             | G1/8     | -            | -                 | -               | -                   | < 92                    |                     |      |    |
|   |           | -             | G1/4     | -            | -                 | -               | -                   | < 95                    |                     |      |    |
|   |           | -             | G3/8     | -            | -                 | -               | -                   | < 92                    |                     |      |    |
|   |           | -             | G1/2     | -            | -                 | -               | -                   | < 92                    |                     |      |    |
|    | AMTE-M-LH | M3            | -        | -            | -                 | -               | -                   | < 55                    | 13                  |      |    |
|   |           | M5            | -        | -            | -                 | -               | -                   | < 72                    |                     |      |    |
|   |           | -             | G1/8     | -            | -                 | -               | -                   | < 76                    |                     |      |    |
|   |           | -             | G1/4     | -            | -                 | -               | -                   | < 83                    |                     |      |    |
|   |           | -             | G3/8     | -            | -                 | -               | -                   | < 82                    |                     |      |    |
|   |           | -             | G1/2     | -            | -                 | -               | -                   | < 88                    |                     |      |    |
|   |           | -             | G3/4     | -            | -                 | -               | -                   | < 85                    |                     |      |    |
|   |           | -             | G1       | -            | -                 | -               | -                   | < 88                    |                     |      |    |
|   |           | -             | -        | 10-32 UNF-2A | -                 | -               | -                   | -                       |                     | < 71 | 15 |
|   |           | -             | -        | 1/8 NPT      | -                 | -               | -                   | -                       |                     | < 77 |    |
|   |           | -             | -        | 1/4 NPT      | -                 | -               | -                   | -                       |                     | < 82 |    |
| -   | -         | 3/8 NPT       | -        | -            | -                 | -               | < 83                |                         |                     |      |    |
| -   | -         | 1/2 NPT       | -        | -            | -                 | -               | < 85                |                         |                     |      |    |
| <b>For vacuum generators VN-T2/T3</b>   |           |               |          |              |                   |                 |                     |                         |                     |      |    |
|   | UO        | M5            | -        | -            | -                 | -               | -                   | -                       | 16                  |      |    |
|   |           | M7            | -        | -            | -                 | -               | -                   | -                       |                     |      |    |
|   |           | -             | G1/8     | -            | -                 | -               | -                   | -                       |                     |      |    |
|   |           | -             | G1/4     | -            | -                 | -               | -                   | -                       |                     |      |    |
| <b>For vacuum generators VN-T4/T6</b>   |           |               |          |              |                   |                 |                     |                         |                     |      |    |
|  | UOM       | -             | G1/4     | -            | -                 | -               | -                   | -                       | 17                  |      |    |
|   |           | -             | G3/8     | -            | -                 | -               | -                   | -                       |                     |      |    |
|   | UOMS      | -             | -        | -            | -                 | -               | -                   | -                       |                     |      |    |
| <b>For soft-start/quick exhaust valve MS6-SV</b>                                    |           |               |          |              |                   |                 |                     |                         |                     |      |    |
|  | UOS       | -             | G1       | -            | -                 | -               | -                   | < 75                    | ms6-sv              |      |    |
| <b>Filter silencer</b>  |           |               |          |              |                   |                 |                     |                         |                     |      |    |
|  | LFU       | -             | G1/4     | -            | -                 | -               | -                   | < 40                    | lfu                 |      |    |
|   |           | -             | G3/8     | -            | -                 | -               | -                   | -                       |                     |      |    |
|   |           | -             | G1/2     | -            | -                 | -               | -                   | -                       |                     |      |    |
|   |           | -             | G1       | -            | -                 | -               | -                   | -                       |                     |      |    |

## Datasheet – Sintered metal design

Function



- For noise reduction and prevention of contamination at the exhaust ports of pneumatic components
- Compact design



| General technical data                             |               |      |
|--|---------------|------|
| Pneumatic connection                               | PK-3          | PK-4 |
| Mounting position                                  | Any           |      |
| Noise level <sup>1)</sup>                          | [dB (A)] < 70 | < 77 |
| Flow rate with respect to atmosphere <sup>2)</sup> | [l/min] 310   | 580  |
| Product weight                                     | [g] 4.5       | 4.1  |

1) Measured at 0.6 MPa with respect to atmosphere at a distance of 1 m

2) Measured at p<sub>1</sub> = 0.6 MPa

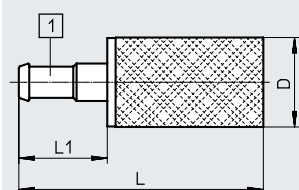
| Operating and environmental conditions |   |             |
|--|---|-------------|
| Operating pressure                     | [MPa]                                     | 0 ... 1     |
|  | [bar]                                     | 0 ... 10    |
| Operating medium                       | Compressed air to ISO 8573-1:2010 [7:-:-] |             |
| Note on the operating/pilot medium     | Lubricated operation possible             |             |
| Ambient temperature                    | [°C]                                      | -10 ... +70 |

| Materials         |                         |
|-------------------|-------------------------|
| Screwed trunnion  | Brass                   |
| Silencer insert   | Bronze                  |
| Note on materials | Free of copper and PTFE |
|                   | RoHS-compliant          |

### Dimensions

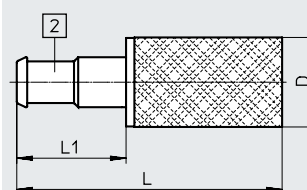
Download CAD data → [www.festo.com](http://www.festo.com)

U-PK-3



[1] Barbed connector for tubing  
I.D. 3

U-PK-4



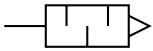
[2] Barbed connector for tubing  
I.D. 4

| Ordering data        |        |      |      |          |        |                  |
|----------------------|--------|------|------|----------|--------|------------------|
| Pneumatic connection | D<br>∅ | L    | L1   | Part no. | Type   | PU <sup>1)</sup> |
| PK-3                 | 8.6    | 23.5 | 8.5  | 4646     | U-PK-3 | 10               |
| PK-4                 | 8.6    | 25.5 | 10.5 | 4932     | U-PK-4 | 10               |

1) Packaging unit

## Datasheet – Polymer design, male thread

Function



- For noise reduction at the exhaust ports of pneumatic components



| General technical data                             |          | G1/8 | G1/4 | G3/8 | G1/2  | G3/4  | G1    |
|--|----------|------|------|------|-------|-------|-------|
| Pneumatic connection                               |          | G1/8 | G1/4 | G3/8 | G1/2  | G3/4  | G1    |
| Mounting position                                  |          | Any  |      |      |       |       |       |
| Noise level <sup>1)</sup>                          | [dB (A)] | < 74 | < 76 | < 82 | < 82  | < 85  | < 90  |
| Flow rate with respect to atmosphere <sup>2)</sup> | [l/min]  | 2000 | 3300 | 6000 | 10300 | 17600 | 20800 |
| Product weight                                     | [g]      | 2.3  | 7.7  | 29.6 | 58.2  | 83    | 139.8 |

1) Measured at 0.6 MPa with respect to atmosphere at a distance of 1 m

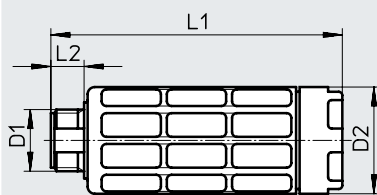
2) Measured at p1 = 0.6 MPa

| Operating and environmental conditions |   |
|--|---|
| Operating pressure                     | [MPa]<br>0 ... 1                          |
|  | [bar]<br>0 ... 10                         |
| Operating medium                       | Compressed air to ISO 8573-1:2010 [7:-:-] |
| Note on the operating/pilot medium     | Lubricated operation possible             |
| Ambient temperature                    | [°C]<br>-10 ... +70                       |

| Materials         |   |
|-------------------|---|
| Housing           | POM                                       |
| Silencer insert   | PU  |
| Note on materials | Free of copper and PTFE<br>RoHS-compliant |

### Dimensions

Download CAD data → [www.festo.com](http://www.festo.com)



### ★ Core Range

| Ordering data              | D2   | L1    | L2   | Part no. | Type     | PU <sup>1)</sup> |
|----------------------------|------|-------|------|----------|----------|------------------|
| Pneumatic connection<br>D1 | ∅    |       |      |          |          |                  |
| G1/8                       | 15.2 | 35.9  | 5.5  | ★ 2307   | U-1/8    | 1                |
|                            |      |       |      | 534222   | U-1/8-50 | 50               |
| G1/4                       | 19   | 57    | 6.5  | ★ 2316   | U-1/4    | 1                |
|                            |      |       |      | 534223   | U-1/4-20 | 20               |
| G3/8                       | 33.5 | 78.8  | 7.5  | ★ 2309   | U-3/8    | 1                |
|                            |      |       |      | 534224   | U-3/8-20 | 20               |
| G1/2                       | 43   | 88.1  | 9    | ★ 2310   | U-1/2    | 1                |
|                            |      |       |      | 534225   | U-1/2-20 | 20               |
| G3/4                       | 45   | 120.7 | 10.5 | ★ 2311   | U-3/4    | 1                |
| G1                         | 55   | 126.5 | 11.5 | ★ 2312   | U-1      | 1                |

1) Packaging unit

## Datasheet – Polymer design, female thread

Function



- For noise reduction at the exhaust ports of pneumatic components



| General technical data                             |          |        |
|--|----------|--------|
| Pneumatic connection                               |          | G1/8   |
| Mounting position                                  |          | Any    |
| Noise level <sup>1)</sup>                          | [dB (A)] | < 76.5 |
| Flow rate with respect to atmosphere <sup>2)</sup> | [l/min]  | 2050   |
| Product weight                                     | [g]      | 3.6    |

1) Measured at 0.6 MPa with respect to atmosphere at a distance of 1 m

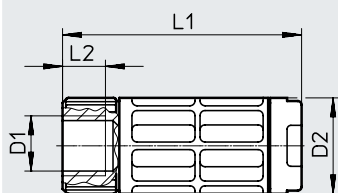
2) Measured at p<sub>1</sub> = 0.6 MPa

| Operating and environmental conditions |       |   |
|--|-------|---|
| Operating pressure                     | [MPa] | 0 ... 1                                   |
|  | [bar] | 0 ... 10                                  |
| Operating medium                       |       | Compressed air to ISO 8573-1:2010 [7:-:-] |
| Note on the operating/<br>pilot medium |       | Lubricated operation possible             |
| Ambient temperature                    | [°C]  | -10 ... +70                               |

| Materials         |                         |
|-------------------|-------------------------|
| Housing           | POM                     |
| Silencer insert   | PU                      |
| Note on materials | Free of copper and PTFE |
|                   | RoHS-compliant          |

### Dimensions

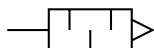
Download CAD data → [www.festo.com](http://www.festo.com)



| Ordering data        |      |    |     |          |         |
|----------------------|------|----|-----|----------|---------|
| Pneumatic connection | D2   | L1 | L2  | Part no. | Type    |
| D1                   | ∅    |    |     |          |         |
| G1/8                 | 15.2 | 38 | 6.5 | 3670     | U-1/8-I |

## Datasheet – Die-cast design

Function



- For noise reduction at the exhaust ports of pneumatic components



| General technical data                             |          | G1/8 | G1/4 | G3/8 | G1/2 | G3/4  | G1    |
|--|----------|------|------|------|------|-------|-------|
| Pneumatic connection                               |          |      |      |      |      |       |       |
| Mounting position                                  |          | Any  |      |      |      |       |       |
| Noise level <sup>1)</sup>                          | [dB (A)] | < 74 | < 80 | < 80 | < 81 | < 83  | < 85  |
| Flow rate with respect to atmosphere <sup>2)</sup> | [l/min]  | 1340 | 2440 | 5800 | 7500 | 10000 | 17500 |
| Product weight                                     | [g]      | 8    | 17   | 37   | 75   | 120   | 233   |

1) Measured at 0.6 MPa with respect to atmosphere at a distance of 1 m

2) Measured at p1 = 0.6 MPa

| Operating and environmental conditions        |       |   |
|---|-------|---|
| Operating pressure for full temperature range | [MPa] | 0 ... 1                                   |
|   | [bar] | 0 ... 10                                  |
|   | [psi] | 0 ... 145                                 |
| Operating medium                              |       | Compressed air to ISO 8573-1:2010 [7:-:-] |
| Note on the operating/pilot medium            |       | Lubricated operation possible             |
| Ambient temperature                           | [°C]  | -10 ... +70                               |
| Corrosion resistance class CRC <sup>1)</sup>  |       | 1   |

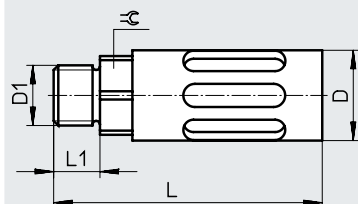
1) Corrosion resistance class CRC 1 to Festo standard FN 940070

Low corrosion stress. Dry internal application or transport and storage protection. Also applies to parts behind covers, in the non-visible interior area, or parts which are covered in the application (e.g. drive trunnions).

| Materials         |   |
|-------------------|---|
| Housing           | Aluminium                                 |
| Screwed trunnion  | Aluminium                                 |
| Silencer insert   | PU  |
| Note on materials | Free of copper and PTFE<br>RoHS-compliant |

### Dimensions

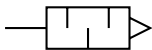
Download CAD data → [www.festo.com](http://www.festo.com)



| Ordering data        |  | D    | L     | L1   | ⌀  | Part no. | Type    |
|----------------------|--|------|-------|------|----|----------|---------|
| Pneumatic connection |  |      |       |      |    |          |         |
| D1                   |  | ∅    |       |      |    |          |         |
| G1/8                 |  | 16   | 39.2  | 5.5  | 14 | 6841     | U-1/8-B |
| G1/4                 |  | 19.5 | 55.6  | 6.5  | 17 | 6842     | U-1/4-B |
| G3/8                 |  | 25   | 86.6  | 7.5  | 19 | 6843     | U-3/8-B |
| G1/2                 |  | 28   | 116.5 | 9    | 24 | 6844     | U-1/2-B |
| G3/4                 |  | 38   | 138   | 10.5 | 32 | 6845     | U-3/4-B |
| G1                   |  | 47.8 | 177   | 11.5 | 36 | 151990   | U-1-B   |

## Datasheet – Die-cast design

Function



- For noise reduction at the exhaust ports of pneumatic components



| General technical data                             |          |         |
|--|----------|---------|
| Pneumatic connection                               |          | 3/4 NPT |
| Mounting position                                  |          | Any     |
| Noise level <sup>1)</sup>                          | [dB (A)] | < 81    |
| Flow rate with respect to atmosphere <sup>2)</sup> | [l/min]  | 11834   |
| Product weight                                     | [g]      | 128     |

1) Measured at 0.6 MPa with respect to atmosphere at a distance of 1 m

2) Measured at p<sub>1</sub> = 0.6 MPa

| Operating and environmental conditions        |       |   |
|---|-------|---|
| Operating pressure for full temperature range | [MPa] | 0 ... 1                                   |
|   | [bar] | 0 ... 10                                  |
|   | [psi] | 0 ... 145                                 |
| Operating medium                              |       | Compressed air to ISO 8573-1:2010 [7:-:-] |
| Note on the operating/pilot medium            |       | Lubricated operation possible             |
| Ambient temperature                           | [°C]  | -10 ... +70                               |
| Corrosion resistance class CRC <sup>1)</sup>  |       | 1   |

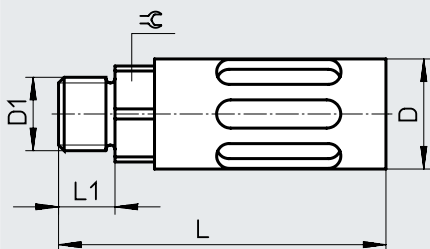
1) Corrosion resistance class CRC 1 to Festo standard FN 940070

Low corrosion stress. Dry internal application or transport and storage protection. Also applies to parts behind covers, in the non-visible interior area, or parts which are covered in the application (e.g. drive trunnions).

| Materials         |                         |
|-------------------|-------------------------|
| Housing           | Aluminium               |
| Screwed trunnion  | Aluminium               |
| Silencer insert   | PU                      |
| Note on materials | Free of copper and PTFE |
|                   | RoHS-compliant          |

### Dimensions

Download CAD data → [www.festo.com](http://www.festo.com)



| Ordering data        |    |     |    |    |          |             |
|----------------------|----|-----|----|----|----------|-------------|
| Pneumatic connection | D  | L   | L1 | ≡  | Part no. | Type        |
| D1                   | ∅  |     |    |    |          |             |
| 3/4 NPT              | 38 | 151 | 18 | 30 | 566823   | U-3/4-B-NPT |



## Datasheet – Design with push-in sleeve

Function



- For noise reduction at the exhaust ports of pneumatic components
- For QS push-in fittings 3 ... 10 mm



| General technical data                             |          | 3    | 4    | 6    | 8    | 10   |
|--|----------|------|------|------|------|------|
| Push-in sleeve $\varnothing$                       |          | 3    | 4    | 6    | 8    | 10   |
| Mounting position                                  |          | Any  |      |      |      |      |
| Noise level <sup>1)</sup>                          | [dB (A)] | < 60 | < 60 | < 60 | < 60 | < 68 |
| Flow rate with respect to atmosphere <sup>2)</sup> | [l/min]  | 170  | 350  | 800  | 1500 | 3100 |
| Product weight                                     | [g]      | 0.4  | 0.5  | 1.1  | 2.3  | 5.5  |

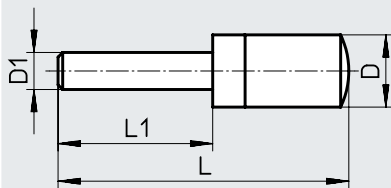
1) Measured at 0.6 MPa with respect to atmosphere at a distance of 1 m  
 2) Measured at  $p_1 = 0.6$  MPa

| Operating and environmental conditions |   |
|--|---|
| Operating pressure                     | [MPa]<br>0 ... 1<br>[bar]<br>0 ... 10     |
| Operating medium                       | Compressed air to ISO 8573-1:2010 [7:-:-] |
| Note on the operating/pilot medium     | Lubricated operation possible             |
| Ambient temperature                    | [°C]<br>-10 ... +70                       |

| Materials         |                |
|-------------------|----------------|
| Screwed trunnion  | PU             |
| Silencer insert   | PU             |
| Note on materials | RoHS-compliant |

### Dimensions

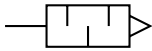
Download CAD data → [www.festo.com](http://www.festo.com)



| Ordering data                |    | D              | L              | L1        | Part no. | Type      |
|------------------------------|----|----------------|----------------|-----------|----------|-----------|
| Push-in sleeve $\varnothing$ | D1 | $\varnothing$  |                |           |          |           |
| 3                            |    | 7.8 +0.1/-0.3  | 29.1 ±0.6      | 14.4 ±0.2 | 165005   | UC-QS-3H  |
| 4                            |    | 7.8 +0.1/-0.3  | 31.0 ±0.6      | 16.3 ±0.2 | 165006   | UC-QS-4H  |
| 6                            |    | 9.8 -0.4       | 41.3 +1.4      | 17.2      | 165007   | UC-QS-6H  |
| 8                            |    | 13.8 +0.2/-0.3 | 54.4 +0.5/-1.0 | 23.4      | 175611   | UC-QS-8H  |
| 10                           |    | 17.8 -0.3      | 68.7 +0.2/-0.8 | 26.7      | 526475   | UC-QS-10H |

## Datasheet – Design with threaded connection

Function



- For noise reduction at the exhaust ports of pneumatic components
- For solenoid valves CPE, Compact Performance



| General technical data                             |          | M5   | M7   | G1/8 | G1/4 | G3/8 |
|--|----------|------|------|------|------|------|
| Pneumatic connection                               |          |      |      |      |      |      |
| Mounting position                                  |          | Any  |      |      |      |      |
| Noise level <sup>1)</sup>                          | [dB (A)] | < 60 | < 58 | < 59 | < 60 | < 60 |
| Flow rate with respect to atmosphere <sup>2)</sup> | [l/min]  | 350  | 800  | 1700 | 3200 | 5000 |
| Product weight                                     | [g]      | 0.4  | 1.2  | 2.6  | 5.2  | 10.5 |

1) Measured at 0.6 MPa with respect to atmosphere at a distance of 1 m

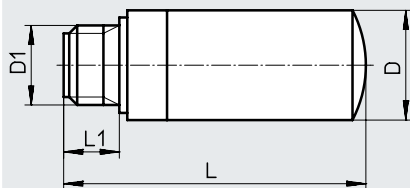
2) Measured at p<sub>1</sub> = 0.6 MPa

| Operating and environmental conditions |   |
|--|---|
| Operating pressure                     | [MPa]<br>[bar]                            |
|  | 0 ... 1<br>0 ... 10                       |
| Operating medium                       | Compressed air to ISO 8573-1:2010 [7:-:-] |
| Note on the operating/<br>pilot medium | Lubricated operation possible             |
| Ambient temperature                    | [°C]                                      |
|  | -10 ... +70                               |

| Materials         |                |
|-------------------|----------------|
| Screwed trunnion  | PU             |
| Silencer insert   | PU             |
| Note on materials | RoHS-compliant |

### Dimensions

Download CAD data → [www.festo.com](http://www.festo.com)

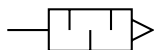


| Ordering data        |                |                |           |          |           |                  |
|----------------------|----------------|----------------|-----------|----------|-----------|------------------|
| Pneumatic connection | D              | L              | L1        | Part no. | Type      | PU <sup>1)</sup> |
| D1                   | ∅              |                |           |          |           |                  |
| M5                   | 7.8 +0.1/-0.3  | 19.4 +0.6/-0.8 | 4.5 ±0.2  | 165003   | UC-M5     | 1                |
|                      |                |                |           | 534217   | UC-M5-50  | 50               |
| M7                   | 9.8 -0.4       | 30.7 +0.6/-0.8 | 5.5 -0.5  | 161418   | UC-M7     | 1                |
|                      |                |                |           | 534218   | UC-M7-50  | 50               |
| G1/8                 | 13.8 +0.2/-0.3 | 38.0 +0.8/-1.0 | 6.5 ±0.1  | 161419   | UC-1/8    | 1                |
|                      |                |                |           | 534219   | UC-1/8-50 | 50               |
| G1/4                 | 17.8 -0.3      | 50.8 +0.8/-1.0 | 8.5 ±0.15 | 165004   | UC-1/4    | 1                |
|                      |                |                |           | 534220   | UC-1/4-20 | 20               |
| G3/8                 | 22.1 -0.4      | 69.5 +0.6/-0.8 | 9.5 ±0.1  | 1707427  | UC-3/8    | 1                |
|                      |                |                |           | 576759   | UC-3/8-20 | 20               |

1) Packaging unit

## Datasheet

### Function



- For solenoid valves VUVB-ST12/ valve terminal VTUB-12
- Mounting via PIN (spring clip), included in the scope of delivery of the valve



### General technical data

|  |                 |      |
|--|-----------------|------|
| Pneumatic connection                               | Cartridge 10 mm |      |
| Mounting position                                  | Any             |      |
| Noise level <sup>1)</sup>                          | [dB (A)]        | ≤ 58 |
| Flow rate with respect to atmosphere <sup>2)</sup> | [l/min]         | 800  |
| Product weight                                     | [g]             | 2.0  |

1) Measured at 0.6 MPa with respect to atmosphere at a distance of 1 m

2) Measured at p1 = 0.6 MPa

### Operating and environmental conditions

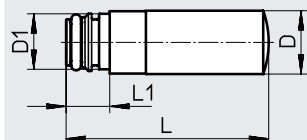
|                                     |   |            |
|-------------------------------------|---|------------|
| Operating pressure                  | [MPa]                                     | 0 ... 1    |
|                                     | [bar]                                     | 0 ... 10   |
| Operating medium                    | Compressed air to ISO 8573-1:2010 [7:-:-] |            |
| Note on the operating/ pilot medium | Lubricated operation possible             |            |
| Ambient temperature                 | [°C]                                      | -5 ... +60 |

### Materials

|                   |                |
|-------------------|----------------|
| Screwed trunnion  | PU             |
| Silencer insert   | PU             |
| Note on materials | RoHS-compliant |

### Dimensions

Download CAD data → [www.festo.com](http://www.festo.com)



### Ordering data

| Pneumatic connection | D<br>∅ | D1<br>∅ | L    | L1  | Part no. | Type        | PU <sup>1)</sup> |
|----------------------|--------|---------|------|-----|----------|-------------|------------------|
| Cartridge 10 mm      | 9.8    | 8.9     | 31.4 | 6.8 | 1224460  | AMTC-P-PC10 | 1                |

1) Packaging unit

## Datasheet – Short design

Function



- Suitable for reducing noise at the exhaust ports of pneumatic systems



| General technical data                             |          | M5   | G1/8 | G1/4 | G3/8 | G1/2 |
|--|----------|------|------|------|------|------|
| Pneumatic connection                               |          |      |      |      |      |      |
| Mounting position                                  |          | Any  |      |      |      |      |
| Noise level <sup>1)</sup>                          | [dB (A)] | < 71 | < 92 | < 95 | < 92 | < 92 |
| Flow rate with respect to atmosphere <sup>2)</sup> | [l/min]  | 91   | 615  | 1000 | 1545 | 2745 |
| Product weight                                     | [g]      | 1.1  | 5    | 9.5  | 17   | 30   |

1) Measured at 0.6 MPa with respect to atmosphere at a distance of 1 m

2) Measured at p<sub>1</sub> = 0.6 MPa

| Operating and environmental conditions       |   |
|--|---|
| Operating pressure                           | [MPa]<br>[bar]                            |
|  | 0 ... 1<br>0 ... 10                       |
| Operating medium                             | Compressed air to ISO 8573-1:2010 [7:-:-] |
| Note on the operating/<br>pilot medium       | Lubricated operation possible             |
| Ambient temperature                          | [°C]                                      |
|  | -40 ... +80                               |
| Corrosion resistance class CRC <sup>1)</sup> | 1   |

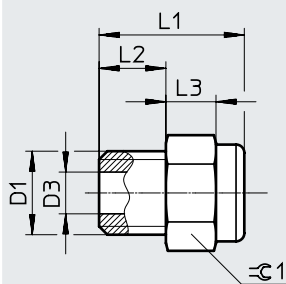
1) Corrosion resistance class CRC 1 to Festo standard FN 940070

Low corrosion stress. Dry internal application or transport and storage protection. Also applies to parts behind covers, in the non-visible interior area, or parts which are covered in the application (e.g. drive trunnions).

| Materials         |                |
|-------------------|----------------|
| Screwed trunnion  | Brass          |
| Silencer insert   | Bronze         |
| Note on materials | RoHS-compliant |

### Dimensions

Download CAD data → [www.festo.com](http://www.festo.com)

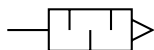


| Ordering data        |    | D3  | L1   | L2   | L3  | ≡C 1 | Part no. | Type         | PU <sup>1)</sup> |
|----------------------|----|-----|------|------|-----|------|----------|--------------|------------------|
| Pneumatic connection | D1 | ∅   | ±0.5 | ±0.1 |     | -0.2 |          |              |                  |
| M5                   |    | 2.5 | 8.7  | 4    | 3   | 6    | 1206621  | AMTE-M-H-M5  | 20               |
| G1/8                 |    | 6.5 | 11.8 | 5.5  | 3.5 | 12   | 1206622  | AMTE-M-H-G18 | 20               |
| G1/4                 |    | 9   | 13.8 | 6.5  | 4   | 15   | 1206623  | AMTE-M-H-G14 | 20               |
| G3/8                 |    | 12  | 16.5 | 7.5  | 6   | 19   | 1206624  | AMTE-M-H-G38 | 10               |
| G1/2                 |    | 15  | 19   | 10   | 6   | 24   | 1206625  | AMTE-M-H-G12 | 10               |

1) Packaging unit

## Datasheet – Long design

### Function



- Suitable for reducing noise at the exhaust ports of pneumatic systems



| General technical data                             |          | M3   | M5   | G1/8 | G1/4 | G3/8 | G1/2  | G3/4  | G1    |
|--|----------|------|------|------|------|------|-------|-------|-------|
| Pneumatic connection                               |          |      |      |      |      |      |       |       |       |
| Mounting position                                  |          | Any  |      |      |      |      |       |       |       |
| Noise level <sup>1)</sup>                          | [dB (A)] | < 55 | < 72 | < 76 | < 83 | < 82 | < 88  | < 85  | < 88  |
| Flow rate with respect to atmosphere <sup>2)</sup> | [l/min]  | 95   | 255  | 1735 | 3140 | 5430 | 10500 | 12400 | 17235 |
| Product weight                                     | [g]      | 0.4  | 1.5  | 7.5  | 13   | 26   | 43    | 80    | 115   |

1) Measured at 0.6 MPa with respect to atmosphere at a distance of 1 m

2) Measured at p<sub>1</sub> = 0.6 MPa

### Operating and environmental conditions

|  |   |             |
|--|---|-------------|
| Operating pressure                           | [MPa]                                     | 0 ... 1     |
|  | [bar]                                     | 0 ... 10    |
| Operating medium                             | Compressed air to ISO 8573-1:2010 [7:-:-] |             |
| Note on the operating/pilot medium           | Lubricated operation possible             |             |
| Ambient temperature                          | [°C]                                      | -40 ... +80 |
| Corrosion resistance class CRC <sup>1)</sup> | 1   |             |

1) Corrosion resistance class CRC 1 to Festo standard FN 940070

Low corrosion stress. Dry internal application or transport and storage protection. Also applies to parts behind covers, in the non-visible interior area, or parts which are covered in the application (e.g. drive trunnions).

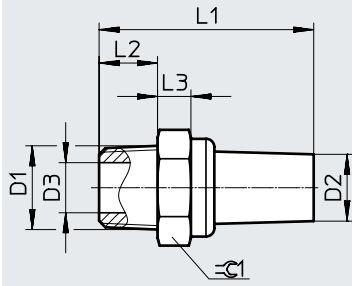
### Materials

|                   |                |
|-------------------|----------------|
| Screwed trunnion  | Brass          |
| Silencer insert   | Bronze         |
| Note on materials | RoHS-compliant |

Datasheet – Long design

Dimensions

Download CAD data → [www.festo.com](http://www.festo.com)



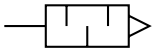
★ Core Range

| Ordering data        |           |     |      |      |     |      |           |               |                  |
|----------------------|-----------|-----|------|------|-----|------|-----------|---------------|------------------|
| Pneumatic connection | D2        | D3  | L1   | L2   | L3  | ≡G1  | Part no.  | Type          | PU <sup>1)</sup> |
| D1                   | ∅<br>+0.5 | ∅   | ±1   | ±0.1 |     | -0.2 |           |               |                  |
| M3                   | 2         | 1.5 | 14   | 3    | 2   | 4    | 1231120   | AMTE-M-LH-M3  | 20               |
| M5                   | 3         | 2.5 | 19.8 | 4    | 3   | 6    | ★ 1205858 | AMTE-M-LH-M5  | 20               |
| G1/8                 | 8         | 6.5 | 23.7 | 5.5  | 3.5 | 12   | ★ 1205860 | AMTE-M-LH-G18 | 20               |
| G1/4                 | 10        | 9   | 29   | 6.5  | 4   | 15   | ★ 1205861 | AMTE-M-LH-G14 | 20               |
| G3/8                 | 12        | 12  | 41   | 7.5  | 6   | 19   | ★ 1205862 | AMTE-M-LH-G38 | 10               |
| G1/2                 | 16        | 15  | 46.5 | 10   | 6   | 24   | ★ 1205863 | AMTE-M-LH-G12 | 10               |
| G3/4                 | 20.5      | 20  | 50   | 10   | 6   | 30   | 1205864   | AMTE-M-LH-G34 | 10               |
| G1                   | 20.5      | 26  | 59   | 10   | 6   | 36   | 1205865   | AMTE-M-LH-G1  | 10               |

1) Packaging unit

## Datasheet – Long design

Function



- Suitable for reducing noise at the exhaust ports of pneumatic systems



| General technical data                             |          | 10-32 UNF-2A | 1/8 NPT | 1/4 NPT | 3/8 NPT | 1/2 NPT |
|--|----------|--------------|---------|---------|---------|---------|
| Pneumatic connection                               |          | 10-32 UNF-2A | 1/8 NPT | 1/4 NPT | 3/8 NPT | 1/2 NPT |
| Mounting position                                  |          | Any          |         |         |         |         |
| Noise level <sup>1)</sup>                          | [dB (A)] | < 71         | < 77    | < 82    | < 83    | < 85    |
| Flow rate with respect to atmosphere <sup>2)</sup> | [l/min]  | 260          | 1615    | 3080    | 5365    | 9240    |
| Product weight                                     | [g]      | 1.7          | 9       | 17      | 29      | 46      |

1) Measured at 0.6 MPa with respect to atmosphere at a distance of 1 m

2) Measured at p<sub>1</sub> = 0.6 MPa

| Operating and environmental conditions       |   |
|--|---|
| Operating pressure                           | [MPa]<br>0 ... 1                          |
|  | [bar]<br>0 ... 10                         |
| Operating medium                             | Compressed air to ISO 8573-1:2010 [7:-:-] |
| Note on the operating/<br>pilot medium       | Lubricated operation possible             |
| Ambient temperature                          | [°C]<br>-40 ... +80                       |
| Corrosion resistance class CRC <sup>1)</sup> | 1   |

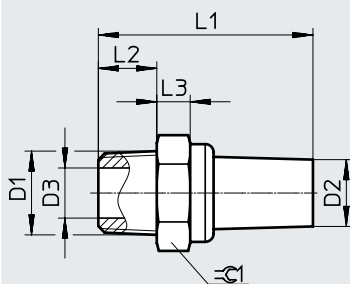
1) Corrosion resistance class CRC 1 to Festo standard FN 940070

Low corrosion stress. Dry internal application or transport and storage protection. Also applies to parts behind covers, in the non-visible interior area, or parts which are covered in the application (e.g. drive trunnions).

| Materials         |                |
|-------------------|----------------|
| Screwed trunnion  | Brass          |
| Silencer insert   | Bronze         |
| Note on materials | RoHS-compliant |

### Dimensions

Download CAD data → [www.festo.com](http://www.festo.com)

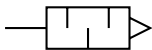


| Ordering data        |    | D2        | D3   | L1   | L2   | L3  | ⌀1   | Part no. | Type          | PU <sup>1)</sup> |
|----------------------|----|-----------|------|------|------|-----|------|----------|---------------|------------------|
| Pneumatic connection | D1 | ∅<br>+0.5 | ∅    | ±1   | ±0.1 |     | -0.2 |          |               |                  |
| 10-32 UNF-2A         |    | 3         | 2.5  | 20.3 | 4    | 3.5 | 6    | 1206994  | AMTE-M-LH-U10 | 20               |
| 1/8 NPT              |    | 8         | 6    | 25.7 | 7    | 4   | 12   | 1206989  | AMTE-M-LH-N18 | 20               |
| 1/4 NPT              |    | 10        | 9    | 34.5 | 11   | 5   | 15   | 1206990  | AMTE-M-LH-N14 | 20               |
| 3/8 NPT              |    | 12        | 11.5 | 43.2 | 11   | 5.5 | 19   | 1206991  | AMTE-M-LH-N38 | 10               |
| 1/2 NPT              |    | 16        | 15   | 49   | 13   | 5.5 | 24   | 1206992  | AMTE-M-LH-N12 | 10               |

1) Packaging unit

## Datasheet

Function



- Use only for vacuum generators VN-T2/T3
- Special minimal resistance silencer
- Facilitates trouble-free operation of the vacuum generator



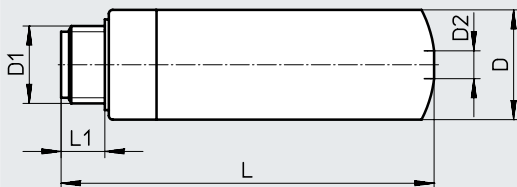
| General technical data |               |     |      |      |  |
|------------------------|---------------|-----|------|------|--|
| Pneumatic connection   | M5            | M7  | G1/8 | G1/4 |  |
| Mounting position      | Any           |     |      |      |  |
| Design                 | Open silencer |     |      |      |  |
| Product weight [g]     | 0.5           | 2.5 | 5    | 8    |  |

| Operating and environmental conditions |   |    |      |      |  |
|--|---|----|------|------|--|
| Pneumatic connection                   | M5  | M7 | G1/8 | G1/4 |  |
| Operating pressure [MPa]               | 0 ... 0.8                                 |    |      |      |  |
| [bar]                                  | 0 ... 8                                   |    |      |      |  |
| Operating medium                       | Compressed air to ISO 8573-1:2010 [7:4:4] |    |      |      |  |
| LABS (PWIS) conformity                 | VDMA24364-B1/B2-L                         |    |      |      |  |
| Ambient temperature [°C]               | -10 ... +60                               |    |      |      |  |

| Materials            |                         |    |      |      |  |
|----------------------|-------------------------|----|------|------|--|
| Pneumatic connection | M5                      | M7 | G1/8 | G1/4 |  |
| Screwed trunion      | PU                      |    |      |      |  |
| Silencer insert      | PU                      |    |      |      |  |
| Note on materials    | Free of copper and PTFE |    |      |      |  |
|                      | RoHS-compliant          |    |      |      |  |

### Dimensions

Download CAD data → [www.festo.com](http://www.festo.com)

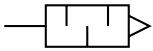


| Ordering data        |      |     |      |     |                |               |
|----------------------|------|-----|------|-----|----------------|---------------|
| Pneumatic connection | D    | D2  | L    | L1  | Part no.       | Type          |
| D1                   | ∅    | ∅   |      |     |                |               |
| M5                   | 7.8  | 2.1 | 19.3 | 4.5 | <b>8141085</b> | <b>UO-M5</b>  |
| M7                   | 9.8  | 3   | 36.7 | 5.5 | <b>197582</b>  | <b>UO-M7</b>  |
| G1/8                 | 13.8 | 3.5 | 48   | 6.5 | <b>197583</b>  | <b>UO-1/8</b> |
| G1/4                 | 17.8 | 5.3 | 62.3 | 8.5 | <b>197584</b>  | <b>UO-1/4</b> |



## Datasheet

### Function



- Use only for vacuum generators VN-T4/T6
- Special minimal resistance silencer
- Facilitates trouble-free operation of the vacuum generator
- Silencer extension for extending the silencer for further noise reduction



| General technical data           |     | UOM-1/4       | UOM-3/8 | UOMS-1/4 | UOMS-3/8 |
|----------------------------------|-----|---------------|---------|----------|----------|
| Type                             |     | UOM-1/4       | UOM-3/8 | UOMS-1/4 | UOMS-3/8 |
| Pneumatic connection             |     | G1/4          | G3/8    | -        |          |
| Design                           |     | Open silencer |         |          |          |
| Type of mounting                 |     | Screw-in      |         | Snap-in  |          |
| Mounting position                |     | Any           |         |          |          |
| Type of seal on screwed trunnion |     | No seal       |         |          |          |
| Product weight                   | [g] | 11.1          | 22.7    | 8.6      | 17.5     |

| Operating and environmental conditions |                   |           |  |
|--|-------------------|-----------|--|
| Operating pressure of vacuum generator | [MPa]             | 0 ... 0.8 |  |
|  | [bar]             | 0 ... 8   |  |
|  | [psi]             | 0 ... 116 |  |
| Ambient temperature                    | [°C]              | 0 ... +60 |  |
| Corrosion resistance class             | CRC <sup>1)</sup> | 2         |  |

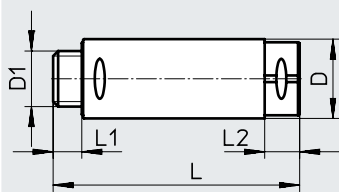
1) Corrosion resistance class CRC 2 to Festo standard FN 940070  
Moderate corrosion stress. Indoor applications in which condensation can occur. External visible parts with primarily decorative surface requirements which are in direct contact with a normal industrial environment.

| Materials         |                         |
|-------------------|-------------------------|
| Housing           | POM                     |
| Inner pipe        | Wrought aluminium alloy |
| Screwed trunnion  | POM                     |
| Silencer insert   | Polyurethane foam       |
| Note on materials | Free of copper and PTFE |

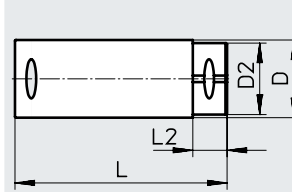
### Dimensions

Download CAD data → [www.festo.com](http://www.festo.com)

#### UOM



#### UOMS



| Ordering data             |    | D    | D2 | L    | L1  | L2   | Part no. | Type     |
|---------------------------|----|------|----|------|-----|------|----------|----------|
| Pneumatic connection      | D1 | ∅    | ∅  |      |     |      |          |          |
| <b>Silencers</b>          |    |      |    |      |     |      |          |          |
| G1/4                      |    | 17.8 | -  | 73   | 8   | 10   | 538432   | UOM-1/4  |
| G3/8                      |    | 23.8 | -  | 74   | 8.6 | 10.5 | 538433   | UOM-3/8  |
| <b>Silencer extension</b> |    |      |    |      |     |      |          |          |
| For UOM-1/4               |    | 17.8 | 16 | 64.5 | -   | 10   | 538436   | UOMS-1/4 |
| For UOM-3/8               |    | 23.8 | 22 | 65.2 | -   | 10.5 | 538437   | UOMS-3/8 |